

# 1770

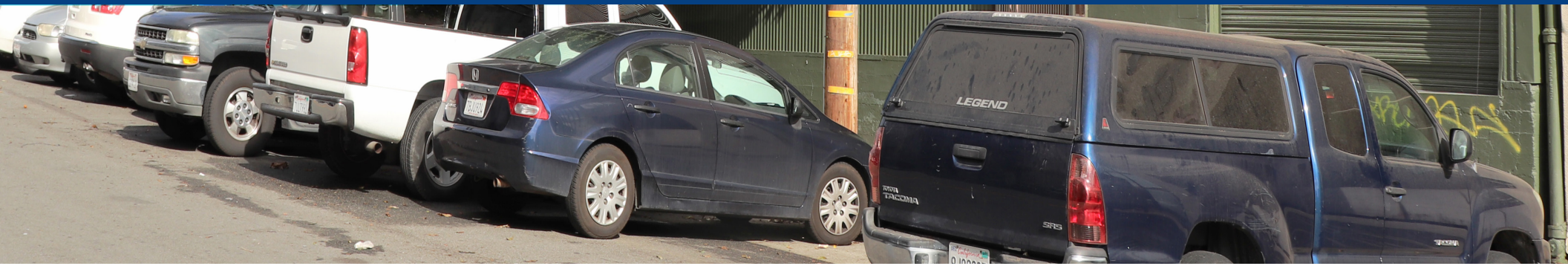
## YOSEMITE AVENUE

SAN FRANCISCO, CALIFORNIA

---

**±4,500 RSF AVAILABLE**  
**OFFICE / WAREHOUSE**  
**FOR LEASE**

---







# 1770

## YOSEMITE AVENUE

ADDRESS	1790 Yosemite Avenue San Francisco, CA 94124	
AVAILABLE SPACE	Warehouse:	±4,000 RSF
	Office:	±500 RSF
	<b>Total:</b>	<b>±4,500 RSF</b>
RENTAL RATE	\$1.50 Industrial Gross	
ZONING	PDR-2	
AVAILABLE	Now	

### BUILDING ATTRIBUTES

- 1 Dock High Door
- 3 Phase / 400 Amps
- Conveniently Located Near US 101 and I-280
- 1 Restroom
- Sink

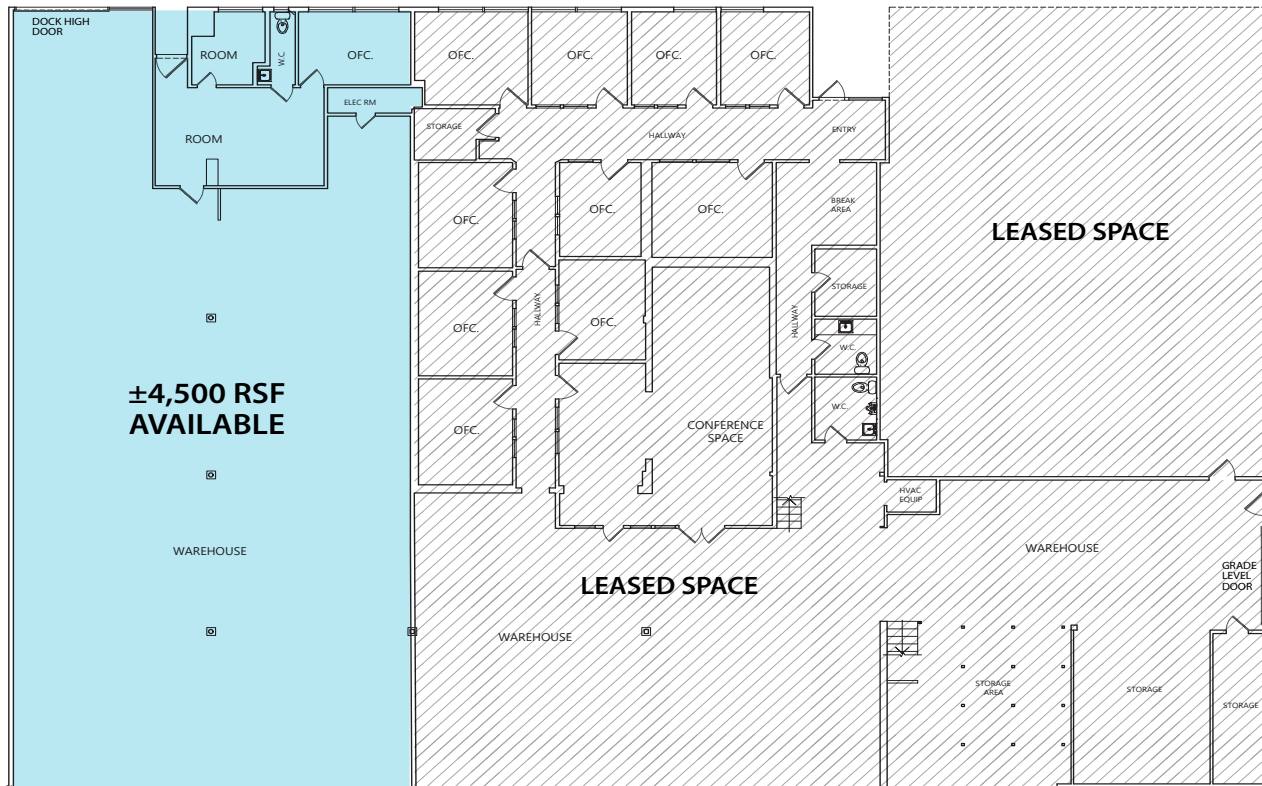




**1770**  
YOSEMITE AVENUE



## FLOOR PLAN



- ±4,500 total RSF
- ±4,000 RSF warehouse / ±500 RSF office



**1770**  
**YOSEMITE AVENUE**





**1770**  
YOSEMITE AVENUE

3RD STREET

## LOCATION FEATURES

- Close Proximity to Highway 101 and I-280
- 15-Minutes to Downtown San Francisco
- 20-Minutes to San Francisco International Airport
- Close to Several Retail Shops and Restaurants Along the 3rd Street Corridor



The image shows the interior of a warehouse. On the left, a teal-colored wall is partially visible. In the center, a white roll-up door is partially open, revealing a metal diamond-patterned expansion gate. To the right of the gate is a window with a black curtain hanging in front of it. The ceiling is high with exposed wooden trusses and a long fluorescent light fixture. The floor is concrete with some cracks. A blue diagonal graphic element is overlaid on the left side of the image.

**1770**  
YOSEMITE AVENUE